

LIEBIG® self-undercutting anchor SUPERPLUS BLS A4



Application range

- > Power plants
- > Machinery
- > Base plates
- > For dynamic and seismic loads
- > Small spacings and edge distances

Properties

- > Self-undercutting anchor with threaded bolt, nut and washer
- > A4-80 stainless steel
- > Automatic self-undercutting, unique heavy-duty anchor for push through installation
- > Cost-effective: No special drills, undercutting or setting tools required
- > Minimal expansion forces allow for small centre and edge distances
- > For indoor and outdoor areas, as well as industrial applications
- > Removable

Cross references

- Cleaning brush
- Blow-out pump
- Tool belt
- Hammer drill SDS plus
- Cordless hammer drill
- Torque wrench
- Socket wrench cordless

Technical specifications

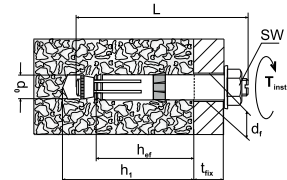


Certifications



Base materials

- Approved for
- > Cracked concrete
- > Non-cracked concrete



Characteristic values	Admissible loads non-cracked concrete C20/25						Admissible loads cracked concrete C20/25			
	Typ	d ₁ [mm]	SW [mm]	d ₀ [mm]	h _{ef} [mm]	h ₁ [mm]	T _{inst} [Nm]	N _{Rec} [kN]	V _{Rec} [kN]	N _{Rec} [kN]
M8-14/80/25	16	16	14	80	100	25	13.1	24	5.7	24
M12-20/80/15	21	19	20	80	105	80	17.2	34.4	11.9	24.5
M16-25/150/30	26	24	25	150	185	180	44.1	88.4	28.6	63.0
M16-25/200/40	26	24	25	200	185	180	59.8	67.4	35.7	67.4

Product online



Order description	Thread size [mm]	L [mm]	d ₀ [mm]	t _{fix} [mm]	PU [pieces]	Price/100 [EUR]	Article number	EAN
LIEBIG SUPERPLUS BLS M8-14/80/25 A4	M8	130	14	25	25		9654080254	4061245000732
LIEBIG SUPERPLUS BLS M12-20/80/15 A4	M12	130	20	15	10		9650080154	4061245001500
LIEBIG SUPERPLUS BLS M16-25/150/30 A4	M16	220	25	30	5		9655150304	4061245000053

Further versions upon request!



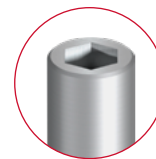
SUPERPLUS SLS A4



SUPERPLUS SKLS A4



SUPERPLUS BLS-P



SUPERPLUS ILS