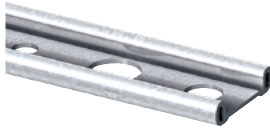


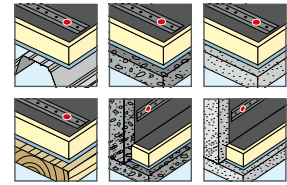
## Flat roof profile FP



### Application range

- > To fix roofing membrane and insulating material to substructures made of concrete, aerated concrete, steel, aluminium trapezoidal profile, timber and wood-based materials.
- > For structural fastening of the edges
- > For fastening the edges of roofing membranes on wall connections and roof edges

### Applications



### Cross references

DABO® SW 8 RT-4.8  
 DABO® SW 8 ET-4.8  
 DABO® TKR-4.8  
 DABO® TKE-4.8  
 DABO® TKR-4-4.8  
 DABO® VHT-R-4.8  
 DABO® VHT-E-4.8  
 Self-drilling screw JT2-ST-2-6.0  
 Self-drilling screw JT3-ST-2-6.0  
 Concrete screw FBS-R  
 Aerated concrete screw FPS-E  
 Universal anchor SDF-S-10H-E  
 Universal anchor SDP-S-10G-E  
 Stress plate HTK-S

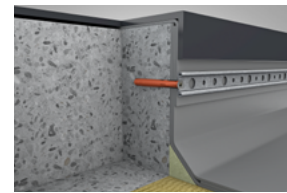
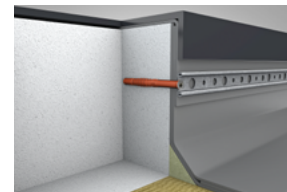
### Properties

- > Alu-zinc-coated steel
- > Metal rail fastening system
- > Easy processing
- > Low weight
- > 3 different hole diameters combined in one profile
- > Total length 2.25 m
- > Flexible application possibilities

### Note

For combination with EJOT DABO® screws, concrete and aerated concrete screws and self-drilling screws. For combination with facade anchors according to ETA-10/0305.

### Certifications



For an approved application in the area of wall connections on the roof parapet (concrete and aerated concrete)

### Technical specifications

Length	2.25 m
Width	30 mm
Height incl. fold edge	7.5 mm
Material thickness	1.5 mm
Hole diameter for stress plate HTK-S	14.5 mm
Hole diameter for facade anchors	10.5 mm
Hole diameter for screws	7.0 mm

### Product online



Order description	Length [m]	Width [mm]	PU [m]	Price/m [EUR]	Article number	EAN
EJOT FP FLD profile	2.25	30	27		7999001886	4061245011653

### Compatibility acc. to ETA-07/0013

	SW 8 RT-4.8	SW 8 ET-4.8	TKR-4.8	TKE-4.8	TKR-4-4.8	VHT-R-4.8	VHT-E-4.8	JT2-ST-2-6.0	JT2-ST-2-6.8	JT3-ST-2-6.0	FBS-R-6.3	JBS-R-7.5	FPS-E-8.0	SDF-S-10H-E	SDP-S-10G-E
<b>Flat roof profile FP</b>	X	X	X	X	X	X	X	X	X	X	X		X	X	X